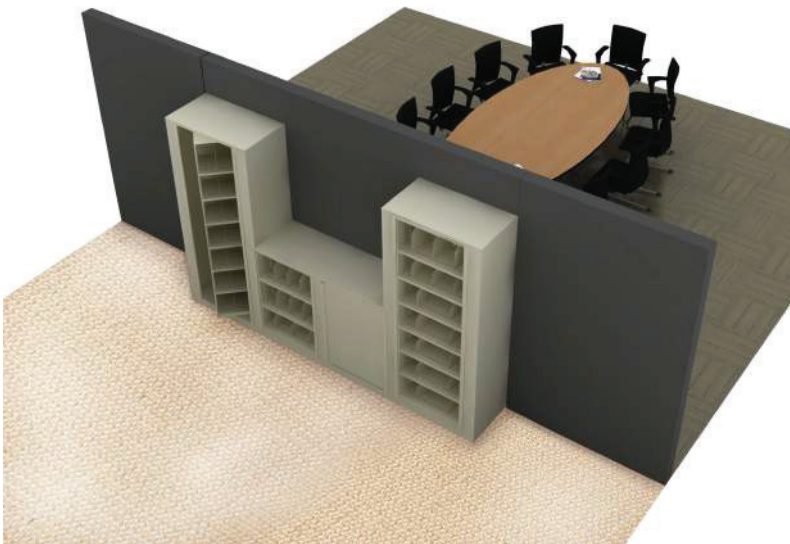




A unique storage solution capable of two-way access to stored contents from adjoining areas in your facility.

- Rotary action allows items to be stored and replenished from different rooms.
- Enclose units with demountable walls or hard walls for a built-in finished appearance.
- Position in an open plan area where workers from adjoining departments or teams can gain access to common materials from two different sides.
- Great for Conference Rooms, Hotel Meeting Rooms, Stock Rooms or Training Centers.
- Reconfigure the interior accessories as your storage needs change.
- Cabinet lock and individual lockable drawers.
- 10 heights from 29 $\frac{1}{2}$ " to 92 $\frac{1}{2}$ "  
Starter widths of 36 $\frac{1}{2}$ " and 45 $\frac{1}{4}$ "



Today's design environment calls for flexible and adaptable space. Use the Times-2 Pass-Through Cabinets to solve unique storage requirements that other basic filing cabinets simply cannot provide.