



# AURORA

A SOLUTION FOR **EVERY STORY**

## MAXIMIZING THE EFFICIENCY OF YOUR PHARMACEUTICAL SPACE

---



# MAXIMIZING THE EFFICIENCY OF YOUR PHARMACEUTICAL SPACE

We associate wellness with harmony, peace, and order. A pharmacy is a crucial place to promote wellness, and as such, **it needs extraordinary organization, efficiency, and accuracy.**

**THE KEY TO ORGANIZATION IS PROPER STORAGE.**  
IN THIS WHITE PAPER, WE'LL HELP YOU WRITE A NEW SCRIPT  
TO MAXIMIZE THE STORAGE IN YOUR PHARMACEUTICAL SPACE.





# OPTIMIZING YOUR FLOORPLAN AND YOUR WORKFLOW

AS EVERY FLOORPLAN IS UNIQUE, SO IS EVERY STORAGE SOLUTION.

Healthcare specialists must efficiently locate proper pharmaceuticals, fill prescriptions, and provide patients with the right medication. Space contributes to efficiency. How far does your pharmacist or technician have to walk to fulfill a prescription order? Are your pharmaceuticals and medication bottles logically placed and organized?



To ensure **proper and accurate pharmaceutical storage**, workflow efficiency and organization are important factors to consider. Organizing prescription medication bottles, lids, labels, bags, glass dropper bottles, and syringe tips increases speed and accuracy during production.

Additionally, **inventory helps improve pharmacy efficiency**. Having too much or too little is problematic. Understanding every item's location is crucial to maintaining an ideal amount of inventory.

**The ideal storage solutions for your pharmacy accounts for these variables, and helps protect the integrity of your pharmaceuticals and organize your supplies.**



# FLEXIBILITY AND ADJUSTABILITY



There are several types of pharmacies, whether standalone pharmacies with a retail component, or an on-site pharmacy within a hospital. They all have different needs, and those needs may fluctuate. As such, you need storage that shifts with the story.

When moving so much product and storing so many different sized bottles, **flexibility is critical**, as is the ability to move shelves, and maintain a consistent speed. Quick retrieval and accessibility are a must: many pharmacies utilize a 20-foot dispensing counter that 3 pharmacists can stand at, with rollout drawers.

Simply reach down, grab the pills, fill it, and label it with machines, and have a set of shelves right behind you so that you can pivot around and **store for added speed and efficiency**. Any organization grows as you go, so it's also important to think of future components and equipment that don't immediately come to mind.





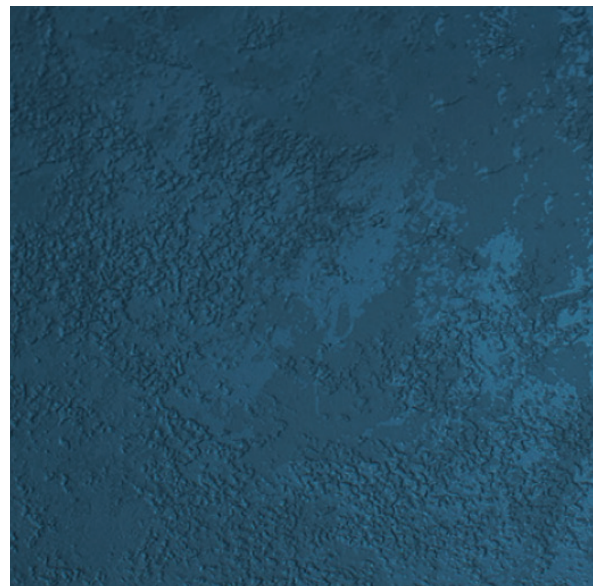
# SUSTAINABILITY

YOU WANT YOUR INSTALLATIONS TO BE SUSTAINABLE, FOR THE HEALTH OF YOUR PATIENTS, BUT ALSO FOR THE HEALTH OF YOUR INVESTMENT.

---

You'll want to purchase shelving and storage solutions that **last decades**, not days of a calendar. Your shelves should have a long shelf life, with a low environmental impact.

You'll also likely want a **textured finish** that endures and hides scuffs and scratches. For instance, Aurora Storage has the industry's longest warranty, and coats products with powder coating that has no harmful Volatile Organic Compounds (VOCs).



# REGULATION COMPLIANCE

Sanitation is a major component of health, which is why you need to ensure your pharmacy and its storage complies with all local **safety and sanitation guidelines**. You could also look for storage solutions that meet additional sanitation standards, to ensure maximum quality. For example, our wire shelving meets the standard set by the National Sanitation Foundation (NSF).

If you want to go above and beyond, you can choose an **antimicrobial powder coat paint** – a unique finishing pigment infused with additives to make the applied surface resistant to microbes and harmful pathogens like bacteria, viruses, fungi, mildew, mold and more. When working with medications, added safety and sanitation precautions are always a good idea.



## UTILIZE VERTICAL SPACE

It's amazing how much **potential space** is wasted with empty air.

A smart storage plan utilizes **vertical space**. Build up rather than out whenever you can.

You can utilize **upper levels** for storing excess: we once aided a hospital that used a side to side system with suspended wire baskets from hanging rods to store extra prescriptions.





# A SOLUTION FOR **EVERY STORY**

Aurora Storage makes an ideal partner for medical and pharmaceutical storage solutions. From our **Times-2™** rotary cabinets that rotate for access from either side, doubling storage capacity while claiming little floor space; to our easy-to-assemble **QuikLok® Shelving**; or to versatile standbys like wire shelving, contact our customer service team to fulfill your **perfect storage solution**.



# AURORA

A SOLUTION FOR **EVERY STORY**

FOR MORE INFORMATION, VISIT OUR WEBSITE [AURORASTORAGE.COM](http://AURORASTORAGE.COM) OR CALL OUR TOLL-FREE LINE: 800-277-1699