



AURORA
A SOLUTION FOR EVERY STORY



ActivWALL™

Designed by Teachers for Teachers

ActivWALL™ is a patent pending, interactive, educational storage system that supports student agency in the classroom by allowing teachers to customize their classrooms with personalized activities and learning tools tailored to the needs of their students.

INTERACTIVE GALLERY



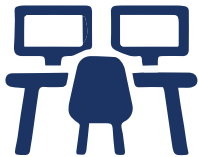
Scan QR code to watch the ActivWALL new product introduction video.



Scan QR code to watch interview with Angie Smith about her experience with ActivWALL.

FUNDING THE SALE

- Capital Funds for Building Improvements
- Education Funds for Equipment
- Annual Building Funding
- Title & Grant Funding



Furniture

ActivWALL™ is furniture that doesn't need to be anchored to the floor, which makes it incredibly useful in older buildings with asbestos flooring. It's also easy to uninstall and reinstall in a new location.



No Construction Needed

ActivWALL™ is the perfect alternative to traditional casework, with installation options that don't require patching of the wall.



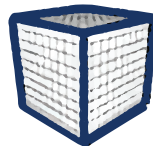
Electrical

Grommets can be added to the slat wall to draw power from existing electrical outlets, providing immediate access to electricity.



Personalization

ActivWALL™ is one of a kind, with slat wall accessories that give teachers the power to personalize their own wall system from thousands of possibilities.



Density

We did the math!
ActivWALL™ offers 3x the storage capacity of traditional casework through its use of the vertical plane, providing between 470 and 590 cubic feet of storage for four bays.



Floor Area

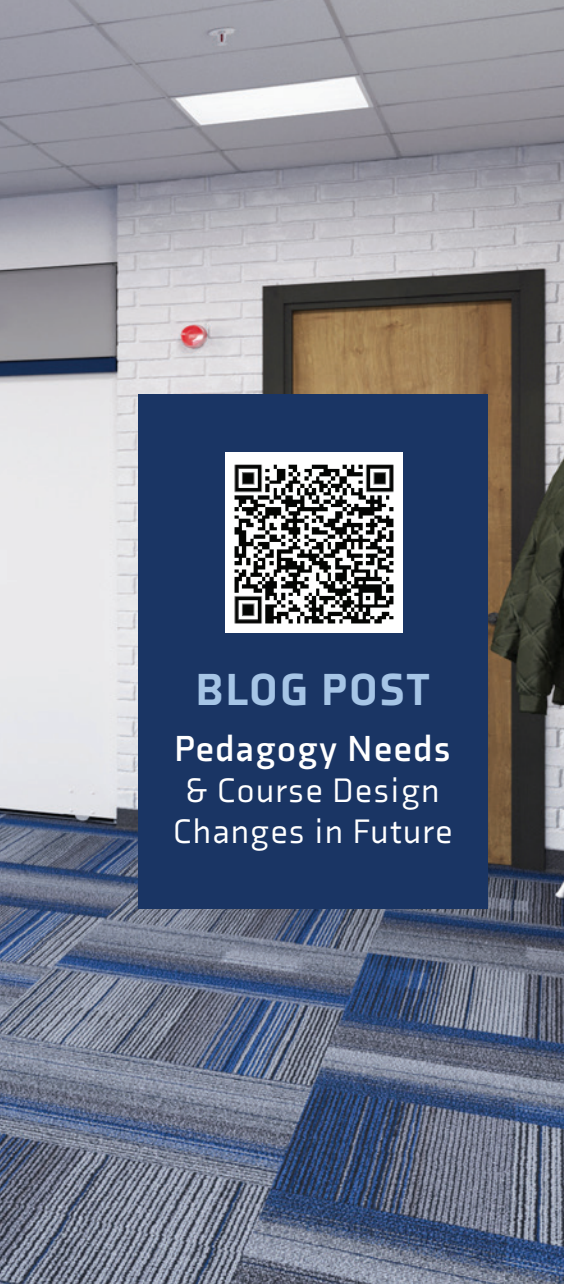
With increased storage density comes the extra benefit of reclaiming up to 50 square feet of floor space in the classroom.



PEDAGOGY SHIFT

A pedagogy shift refers to a significant change or transformation in the methods, approaches, and philosophies of teaching and learning. It involves rethinking and adapting the ways in which education is delivered to better align with the evolving needs of students, advancements in technology, and changes in society. Pedagogy shifts can occur at various levels, including within a single classroom, an entire school or institution, or even on a broader scale within an educational system.

ActivWALL™ can transform the individual classrooms or the entire district by focusing educators on **Active Learning strategies** engaging students in activities that require them to participate, discuss, analyze, and apply concepts. ActivWall™ facilitates the shift away from passive listening and focuses on hands-on experiences.



STUDENT CENTERED

A shift towards **student-centered learning** emphasizes tailoring education to individual student needs, interests, and learning styles. This approach encourages active participation, critical thinking, and self-directed learning, that supports student agency in the classroom.

Student agency refers to learning through activities that are meaningful and relevant to learners, driven by their interests, and often self-initiated with appropriate guidance from teachers. To put it simply, student agency gives students voice and often, choice, in how they learn.

ActivWALL™ provides a solution that creates zones within the classroom, dedicated areas for collaboration, quiet individual work, and student-centered learning.

PROJECT BASED

Project-based learning shifts the focus from isolated subjects to interdisciplinary projects. Students work on real-world projects, applying knowledge and skills to solve complex problems. **ActivWALL™** promotes collaborative, project-based learning allowing students to apply knowledge and skills to solve complex problems as a team. Educators can configure **ActivWALL™** into zones for multiple groups of students work on individualized material simultaneously – increasing the effectiveness of the classroom.

INCLUSIVE EDUCATION

Inclusive pedagogy aims to create equitable learning environments for diverse student populations, addressing different learning needs and styles. Educators must ensure that every student, regardless of their abilities, feels valued, supported, and included in the learning community. Inclusion is not just about physical accessibility, but also about fostering a sense of belonging and ensuring that all students can actively participate in the learning process. By providing easily configurable spaces within the classroom that can be tailored to address individual student needs, **ActivWALL™** demonstrates commitment to the unique needs of every student.

ASSESSMENT METHODS

Shifting **assessment methods** from traditional exams to more authentic forms of evaluation, such as project portfolios, presentations, and peer assessments, can provide a more comprehensive view of students' abilities.

ActivWALL™ fosters this educational shift by providing flexible, configurable space for collaboration, presentations, group work, team building and peer assessments while creating more classroom space for students and better organizing storage of necessary student materials. All this supports student agency in the classroom.

MODULE FAMILY



01

In-Room Library

Literacy is a fundamental tool in the classroom, providing a strong foundation for learning, critical thinking, and comprehension of complex concepts. **ActivWALL™** provides a literacy functionality to the classroom environment, acting as a wall when needed but transforming into an expansive in-room library when pulled out. This incredible feature allows for storage of up to 350 books per pull-out Pivot Wall, providing students with a cornucopia of literary treasures right at their fingertips – without ever leaving the class-room! The Pivot Wall ensures that no student is left behind, regardless of their reading level or background.

Features

- 350 Book In-Room Library
- Removable Book Displays
- Front Facing Book Display
- Student Accessibility without Teacher Intervention

MORE
ActivWALL
Options





Presentation Zone

ActivWALL™ offers a unique configuration, an exclusive presentation area that enables students to enhance their skills in a dedicated space, either for the full class or in small group settings.

Features

- Stage-like dedicated presentation platform
- Surfaces are projector screen capable, white board writable, and magnetic.
- Student accessibility without teacher intervention.



Workshop Storage

ActivWALL™ is an integrated technology system that provides high-density, easy-access storage for teacher manipulatives, project-based learning materials, STEAM materials, and digital tools for teachers.

Features

- Storage for Teacher Manipulatives, STEAM/ Maker Space, and Activity Based Materials
- In-Wall Electrical Power for Digital Storage and Charging
- Slat Wall Storage Accessories Standard

MODULE FAMILY



04

Collaboration Zone

ActivWALL™ can create multiple zones for student collaboration. Teachers can configure the system for multiple teams to work on individualized material at the same time increasing the effectiveness of the classroom.

Features

- Multiple sliding white board writable and projection surfaces.
- Pivot walls that pull out to create divided/private collaboration zones
- Student accessibility without teacher intervention
- 6 writing surfaces for multiple teams to work



05

Inclusion Zone

ActivWALL™ can provide calm retreat zones where students can take breaks from the classroom environment, a place they can recharge, regulate their emotions, and regain focus.

Features

- Designated zone for quiet inclusion of special needs or work space for makeup work or re-testing.
- Electrification & Lighting Available
- Desk/Workspace Options
- Student Accessibility without Teacher Intervention



06

General Storage

Classroom storage for less frequently accessed or bulky student and teacher materials can be accomplished in the **ActivWALL™** General Storage module. Shelves can be equipped with adjustable dividers to create “cubby” storage. Longer term supplies storage can be accomplished in **ActivWALL™** upper cabinet storage.

Features

- 80 Cubic Feet of Storage
- Adjustable to Fit Bulky Items or Totes
- 250 Pounds per Shelf Capacity
- Student Accessibility without Teacher Intervention



07

Office Space

ActivWALL™ Office module creates additional classroom learning space by providing a teacher office within the ActivWall. Desktop, lighting, electrical power and seating can all be available or easily hidden behind the sliding white board.

Features

- 12 square feet desk surface
- Easily Accessible Supplies Storage
- Slat Wall storage accessories standard
- Integrated lighting and electrical outlets
- Secure, Hidden from Classroom when Closed

MODULE OPTIONS



SHELVING ONLY

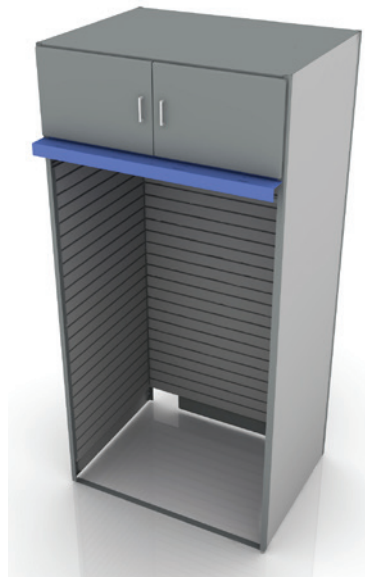
80 Cubic Feet of Storage



AWMOD-48736100-SH

SLATWALL ONLY

Slatwall on 3 Sides



AWMOD4836100-NOPD

PIVOT WALL

Pullout Pivot Wall
Slatwall on 2 Sides



AWMOD4836100-PD

TYPICAL CLASSROOM OPTIONS



5 MODULE TYPICAL CLASSROOM

Shown

5 Units: 20 feet across

- General storage
- Slatwall storage
- Folding pivot walls
- Overhead cabinets

Sliding whiteboard not shown for clarity purposes.

4 MODULE TYPICAL CLASSROOM

Shown

4 Units: 16 feet across

- General storage
- Slatwall storage
- Folding pivot walls
- Overhead cabinets

Sliding whiteboard not shown for clarity purposes.



ActivWALL™

Palos Park, Illinois, Palos School District 128

Designed by Teachers for Teachers



AURORA

www.aurorastorage.com

600 South Lake Street • Aurora, IL 60506

Ph: 630-897-6951 • Fax: 630-897-6994

Toll Free: 800-277-1699

AWB-012724

Contact your regional today:



Sourcewell 



Contract Holder
Contract 47Q5MA21D08R9

U.S. Small Business Enterprise